

# Strategic Engagement and Partnerships (SEP)

"We channel the global expertise of our members for the advancement of engineering, and the benefit of society. Gathering intelligence from engineers across the profession, we inspire technology innovation, develop best practice, provide robust, impartial information to key stakeholders, and influence government policy."

Digital Futures | Education and Skills | Healthy Lives | People-centric Infrastructure  
Productive Manufacturing | Sustainable Planet



**Dr Joanna Cox**  
Head of Strategic  
Engagement  
and Partnerships



Built  
Environment

**Rick Hartwig**



Design and  
Manufacturing

**Alan Howard**



Devolved Nations

**Kate-Zillah Sharpe**



Digital

**Ahmed Kotb**



Energy

**Caroline Holman**



Healthcare

**Nury Moreira**



Skills, Education  
and Innovation

**Stephanie Baxter**



Sustainable Planet  
and Climate Change

**James Robottom**



Transport  
(on maternity leave)

**Anna Bonne**



Transport

**Paloma Cid**

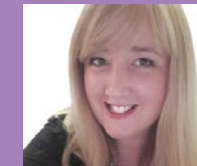
## Programme and Operations Team



**Andrew Rylah**  
Programme and  
Operations Manager;  
Engineering Safety



**Duncan Kenyon**  
Senior Projects Officer



**Sally Hobbs**  
Departmental  
Administrator



**Kala Raju**  
Content Producer

## Support



**Robert Beahan**  
Public Affairs Lead

Email: [sep@theiet.org](mailto:sep@theiet.org)